

FAX +31 40 2063600

- Yes, I would like to consign Equipment to your Auction.
- Yes, I want a WWA Representative to visit/call me.
- Yes, I will need hotel accommodation.
- Yes, I will require visa assistance.
- Yes, I will require import or export information.

First Name _____

Last Name _____

Title _____

Company Name _____

Street Address _____

Address (cont.) _____

City _____

State/Province _____

Zip/Postal Code _____

Country _____

Country Code Area Code Phone Number

Work Phone _____

Fax _____

E-mail _____

For more information and assistance, please fill in the above form and fax to WWA, Europe Office.



'99 Komatsu D65 PX



UNRESERVED PUBLIC AUCTION

2nd and 3rd of December 2005

Eindhoven - Sterksel • The Netherlands

WWA BidLive

Internet bidding available for this auction

Visit www.wwauctions.com for details



December 2nd and 3rd , 2005 The Netherlands Auction starts at 9:00 A.M.



A2 Direction Amsterdam



A2 Direction Maastricht

WWA Europe Auctions
Phone: +31 40 2076041
Fax: +31 40 2063600
Email: europe@wwauctions.com
Website: www.wwauctions.com

Office/ Mail address:
P.O. Box 59
5595 ZH Leende
The Netherlands

Yard address:
Pastoor P. Thijssenlaan 41-43
6029 RL Sterksel
The Netherlands

Registration

A bidding card may be obtained by filling in an application form to be provided by the auctioneer. An applicant must provide V.A.T number if applicable, identification (drivers license or passport). A deposit will be required for registration of no less than € 10,000.- and or an official bank guarantee of the amount mentioned earlier. Deposits will be returned at the auction for those who have registered but made no purchases at the auction.

Terms of Sale

- All purchases will be made in Euros (€). A 2% purchasers handling charge applies to all purchases and a 7% purchasers handling charge applies to all purchases below Euro 2,500. VAT will be charged on the handling charges.
- Payments shall be made in Euros (€) and made in cash, by direct bank transfer (SWIFT 01) or by other means acceptable to the auctioneers at his sole discretion. When payment is done by direct bank transfer please notify that the payment must be done for the full amount, with no cost whatsoever to the recipient. Full payment shall be made within 7 days after the date of sale. To avoid high bank charges please use our full bank details as mentioned below.
Bank transfer should be made to:
ABN AMRO Bank Valkenswaard
Account Name: WWA Europe Auctions B.V.
Account No: 40.00.99.144
BIC Code: ABNANL2A
IBAN Code: NL 88 ABNA 0.40.00.99.144
(When instructing payment with your bank, please quote your buyer number!)
- No purchases may be removed from the auction site until paid in full of any and all amounts due to the auctioneer after the sale date.
- 25% of the purchase price or 10,000 Euros, whichever amount is higher, shall be paid at the date of the Auction and the balance shall be paid within 7 days after the date of the Auction. No purchases may be removed from the Auction site until paid in full of any and all amounts due to the Auctioneer after the sale date.
- Postal address is: WWA Europe Auctions B.V., Po Box 59, 5595 ZH Leende, The Netherlands

Descriptions of Lots / No Warrantees

The descriptions in this brochure are believed to be correct, however the descriptions are merely a guide and are in no way a warranty, representation or guarantee, expressed or implied. Neither the Auctioneer nor the Owner is responsible for any errors

claim on account of the quality, character or condition of the equipment purchased.

Inspection of equipment

The equipment can be inspected in our yard Pastoor P. Thijssenlaan 43, 6029 RL Sterksel, The Netherlands (with free zone status), one of the strategic area's in Europe (Route map on facing page) on the November 30th and December 1st. The Bidder / Buyer is totally responsible and exclusively on his personal inspection of the equipment. Should you have any questions during the previews or at the Auction, please talk to the Auctioneers.

Import / Export

- Certain requirements may have to be met before the equipment may be imported or exported. Compliance with such requirements is the sole responsibility of the Purchaser;
- The Auctioneer does not provide safety certificates, certificates of origin or the like;
- Payments of export duties, if applicable, are the sole responsibility of the Purchaser of the equipment;
- The auction site is a bonded area Free Zone. Purchasers of equipment are required to obtain the required customs documents to remove the equipment from the auction site at their own account. Custom broker approved by the auctioneer is available at the auction site to assist the Purchasers therewith at Purchaser's cost.

Consignments.

Consignments close at December 1st, 2005. If you have equipment to sell, whether single pieces or large fleets, WWA Europe Auctions can offer you a variety of proposals to meet your specific needs.

Absolute Auction Policy.

Equipment sold at WWA Europe Auctions is sold to the highest bidder without minimums or reserves of any kind, regardless on their behalf. Anyone with knowledge of an Owner attempting to bid on his own equipment is encouraged to notify WWA Europe Auctions immediately.

Hotels

NH Geldrop, Bogardeind 219, 5664 EG, Geldrop. Tel: +31 40 286 7510
Golden Tulip Weert, Driesveldlaan 99, 6001 KC, Weert. Tel: +31 495 539655
Van der Valk Hotel Eindhoven, Aalsterweg 322, 5644 RL, Eindhoven. Tel: +31 40 211 6033
Novotel Eindhoven, Anthony Fokkerweg 101, 5657 EJ, Eindhoven. Tel: +31 40 252 6575

Airports

- Eindhoven Airport, www.eindhovenairport.nl
- Düsseldorf International Airport, www.duesseldorf-international.de
- Brussels International Airport, www.brusselsairport.be
- Amsterdam Schiphol Airport, www.schiphol.nl

Visa Assistance.

This brochure is an invitation to all interested participants from Europe and outside of Europe. For customers planning to attend the sale who need an entry visa don't hesitate to contact us.

Upcoming Auctions; Dubai 13-14-15 December
Perth 24 January



'00 Komatsu D61EX



'00 Fiat Hitachi W190



'99-'02 Bell B40C, Choice of 5



'04 HITACHI ZX450LC



Komatsu D20P-3 Crawler Tractor



'02 Volvo L150E, Choice of 5 Pieces



'96 Terex 2566C 6x6



'98 Fuchs MHL 320



'00 Cat M320



'01 Neuson 12002RDV

Crawler Tractors:

- 1999 Komatsu D65PX Crawler Tractor S/N 62719
- 2000 Komatsu D61E-12 Crawler Tractor S/N B1504, c/w 6-way blade, EROPS cab, draw bar, Unused track pads
- 2000 Komatsu D31P-20 Crawler Tractor/Bulldozer S/N 49115, c/w 6-way blade
- Komatsu D20P-3 Crawler Tractor S/N 32863, c/w bkt, push blade, offset boom, cab

Wheel Loaders

- 2002 Cat 966G-II Wheel Loader S/N AWY00416, c/w bkt, cab, 26.5x25 tires
- 2002 Cat 966G-II Wheel Loader S/N AWY00464, c/w bkt, cab, 26.5x25 tires
- 2001 Cat 972G Wheel Loader S/N 6AW00374, c/w bkt, cab, 25.5x25 tires
- 1995 Cat 938F Wheel Loader S/N 8SM00144, c/w bkt, AC cab, 20.5x25
- 2002 Case C821 Wheel Loader
- 2000 Fiat Hitachi W190 Wheel Loader S/N 474471, c/w bkt, cab, 23.5x25 tires
- Furukawa FL170 4x4 Wheel Loader S/N 0137, c/w bkt, cab, 20.5x25 Tires
- 2004 Komatsu WA320 Wheel Loader S/N 50151
- 2002 Volvo L150E Wheel Loader S/N 6009, c/w GP bucket, A/C, EROPS
- 2002 Volvo L150E Wheel Loader S/N 6011, c/w GP bucket, A/C, EROPS

- 2002 Volvo L150E Wheel Loader S/N 6028, c/w GP bucket, A/C, EROPS
- 2002 Volvo L150E Wheel Loader S/N 6035, c/w GP bucket, A/C, EROPS
- 2002 Volvo L150E Wheel Loader S/N 6036, c/w GP bucket, A/C, EROPS
- 2002 Volvo L150D Wheel Loader S/N 62584, c/w GP bucket, A/C, EROPS
- 2002 Volvo L150D Wheel Loader S/N 62596, c/w GP bucket, A/C, EROPS
- 2000 Volvo L150C Wheel Loader S/N L150CV4263, c/w GP bucket, A/C, EROPS
- 2003 Volvo L120E Wheel Loader S/N L120EV16672
- 2003 Volvo L110E Wheel Loader
- 2003 Volvo L110E Wheel Loader
- 2003 Volvo L70E Wheel Loader
- 1996 Schaeff SKL835 Wheel Loader S/N 8355/0343, c/w EROPS, extra valve, quick hitch, bkt, forks

Motor Graders

- Komatsu GD850 Motor Grader S/N 201249
- Komatsu GD850 Motor Grader S/N 201865
- Caterpillar 12E Motor Grader S/N 99E02855

Articulated Dumptrucks

- 2002 Bell B40C 6x6 Articulated Dumper S/N 5966, c/w 6 cyl dsl
- 2001 Bell B40C 6x6 Articulated Dumper S/N 6142, c/w 6 cyl dsl
- 2001 Bell B40C 6x6 Articulated Dumper S/N 5852, c/w 6 cyl dsl
- 2000 Bell B40C 6x6 Articulated Dumper S/N 5603, c/w 6 cyl dsl

- 1999 Bell B40C 6x6 Articulated Dumper S/N 4342, c/w 6 cyl dsl
- 2002 Bell B30D Articulated Dump Truck S/N 6476
- 2002 Bell B30D Articulated Dump Truck
- 1993 Volvo A35 6x6 Articulated Dump Truck S/N 2156
- 1990 Volvo A25 6x6 Articulated Dump Truck S/N 6408
- 1990 Volvo A25 6x6 Articulated Dump Truck
- 2001 Terex TA 25 6x6 Articulated Dump Truck
- 2001 Terex TA 25 6x6 Articulated Dump Truck
- 1996 Terex 2566C 6x6 Articulated Dump Truck S/N A5361039

Hydraulic Excavators

- 2004 Hitachi ZX450 Hydraulic Excavator S/N 10797
- 1999 Hitachi EX355 Hydraulic Excavator
- 2000 JCB 450LC Hydraulic Excavator
- 2000 JCB 450LC Hydraulic Excavator
- 1998 Neuson Hydraulic Excavator
- 2000 Daewoo 300LC Hydraulic Excavator
- 1997 Daewoo 280 Hydraulic Excavator
- 2002 Daewoo 300 Hydraulic Excavator S/N 0649, c/w bkt, quick hitch, AC cab
- 1999 Kobelco 460 Hydraulic Excavator
- 1999 Komatsu PC450LC Hydraulic Excavator S/N 12242
- 2001 Neuson 12002RDV Hydraulic Excavator S/N AA03147V, c/w quick coupler, piped, sideshift boom, push blade, cab
- 1996 Komatsu PC75UU-2 Hydraulic Excavator S/N 11141, c/w bkt, push blade, offset boom, cab

Mobile Excavators

- 1999 Komatsu PW130-6K Mobile Excavator S/N K30254, c/w

- bkt, blade, check valves, piped
- 1995 Case 688B-P Mobile Excavator S/N 119100, c/w bkt, piped, quick coupler, push blade, cab, outriggers
- 1995 Case 688B-P Mobile Excavator S/N 119236, c/w bkt, quick coupler, piped, push blade, cab, outriggers
- 1997 Cat 317 Mobile Excavator

Material Handlers;

- 1998 Fuchs MHL320 Mobile Excavator S/N 3200100085, Material Handler, c/w Fuchs 5' nger hyd grapple, elevated cab, outriggers

Mini Excavators

- 1998 Komatsu PC20R-8 2 Ton Mini Excavator S/N F30083, c/w bkt, piped, sideshift boom, cab, rubber tracks
- Zeppelin ZR6 3.5 Ton Mini Excavator S/N 11764469, c/w bkt, sideshift boom, push blade, cab, additional bkt
- 1992 Takeuchi TB045 4.5 Ton Mini Excavator S/N 1455077, c/w bkt, piped, sideshift boom, push blade, cab, rubber tracks
- 2000 O&K RH1.45 4.5 Ton Mini Excavator S/N 510148, c/w bkt, piped, sideshift boom, push blade, cab, rubber tracks
- 1997 Komatsu PC45 4.5 Ton Mini Excavator S/N F1772, c/w bkt, piped, sideshift boom, push blade, cab, rubber tracks
- 2000 Cat 301.5 1.5 Ton Mini Excavator S/N 3YW00653, c/w bkt, piped, sideshift boom, push blade, EROPS cab, rubber tracks
- 1997 Yanmar B20-2 Mini Excavator, c/w blade, offset boom, rubber tracks
- 1999 Komatsu PC27 Mini Excavator S/N F30147, c/w bkt, third valve, blade, cab, rubber tracks



'00 Extec Megabite Mobile Crusher



'03 MAN 18.463 FLS TGA Choice of 5 pieces



'05 Janma 25-2 Unused



'02 '03 Komatsu PC210 Choice



'00 Caterpillar TH62



'00 MB 1841 LS Cargo, Choice of 2



'94 Bitelli SF60T3



Unused 55-ft Long Arm Set - Hitachi EX200 & ZX200 Excavator



Kobelco SK07-2 Skid steer Loader



'00 Daewoo 300 Solar LC

Aggregate Crusher

2000 Extec Megabite Mobile Crushing Plant S/N 6508, c/w reverse crush

Asphalt Pavers

1994 Bitelli SF60T3 Asphalt Paver S/N 93"940014, c/w canopy, conveyer belt
Marks SF502 Asphalt Paver, S/N 159201

Telescopic Material Handlers

2000 Cat TH62 4x4x4 Telescopic Material Handler S/N 4141, c/w fork 2 section boom, A/C cab, 15.5x25 Tire
Manitou Telescopic Material Handler, for spare parts only

Truck Tractors

2003 MAN 18.463 FLS TGA Truck Tractor S/N WMAH05ZZZ3M360420, c/w 6-cyl dsl engine, rear air suspension, full specs, additional info in the of ce
2003 MAN 18.463 FLS TGA 4x2 Truck Tractor S/N WMAH05ZZZ3M360296, c/w 6-cyl dsl engine, rear air suspension, full specs, additional info in the of ce
2003 MAN 18.463 FLS TGA 4x2 Truck Tractor S/N WMAH05ZZZ3M360278, c/w 6-cyl dsl engine, rear air suspension, full specs, additional info in the of ce
2003 MAN 18.463 FLS TGA 4x2 Truck Tractor S/N WMAH05ZZZ3M360142, c/w 6-cyl dsl engine, rear air suspension, full specs, additional info in the of ce
2003 MAN 18.463 FLS TGA 4x2 Truck Tractor S/N

WMAH05ZZZ3M361988, c/w 6-cyl dsl engine, rear air suspension, full specs, additional info in the of ce
2001 Iveco LD440-E34 4x2 Truck Tractor S/N WJMM1VSK00C086211, c/w 6-cyl dsl engine, P/S, A/C, sleeper cabin, spoiler kit, rear air suspension, retarder
2001 Iveco LD440-E34 4x2 Truck Tractor S/N WJMM1VSK00C088718, c/w 6-cyl dsl engine, P/S, A/C, sleeper cabin, spoiler kit, rear air suspension, retarder
2001 Iveco LD440-E34 4x2 Truck Tractor S/N WJMM1VSK00C095072, c/w 6-cyl dsl engine, P/S, A/C, sleeper cabin, spoiler kit, rear air suspension, retarder

Cargo Trucks

2000 Mercedes Benz 1840 L Actros 4x2 Curtain Side Cargo Truck S/N WDB9500341K486784, c/w 6-cyl dsl engine, P/S, rear air suspension, 3 axle Schwarzmulzer PA3/E Curtain Side Trailer S/N 55.908
2000 Mercedes Benz 1840 L LBW Actros 4x2 Curtain Side Cargo Truck S/N WDB9500351K487378, c/w 6-cyl dsl engine, P/S, rear air suspension, hyd lift gate, 3 axle Hangler 3PE 24 Curtain Side Trailer S/N 940384 with hyd lift gate
1991 Scania P93ML 4x2 Cargo Truck S/N XLEPM4X2A04299892, c/w P/S, rear air suspension

Mixer Trucks

2000 Ausa 500RMX Concrete Mixer Truck S/N 22993
2000 AUSA 501RMX Concrete Mixer Truck S/N 29790
2000 AUSA 502RMX Concrete Mixer Truck S/N 24953

Trucks

Foremost Delta 100 Truck S/N 901695, c/w Hiab 2.8 lorry crane, spare tire, Artic package

Trailers

1990 Trailmaster 60 Ton Low Bed Trailer, c/w 3 axles
1995 36 Ton Flatbed Trailer S/N BT1044, c/w 2 axles
Eggers HWT16Z2/1 Skeleton Container Trailer S/N 84506013, c/w 2 axles, No Registration Documents

Attachments

2005 42 In. Excavator Bucket S/N 3031, to t Cat 320, 320LC, Unused
2005 42 In. Excavator Bucket S/N 3035, to t Cat 320, 320LC, Unused
2005 39 In. Excavator Bucket S/N 3033, to t Komatsu PC200, PC210 & Hitachi EX200, Unused
2005 39 In. Excavator Bucket S/N 3038, to t Komatsu PC200, PC210 & Hitachi EX200, Unused
2005 36 In. Excavator Bucket S/N 3046, to t Komatsu PC200, PC210 & Hitachi EX200, Unused
2005 36 In. Excavator Bucket S/N 3048, to t Komatsu PC200, PC210 & Hitachi EX200, Unused
2005 30 In. Excavator Bucket S/N 3059, to t Komatsu PC120 & Hitachi EX120, Unused
2005 30 In. Excavator Bucket S/N 3060, to t Komatsu PC120 & Hitachi EX120, Unused
2005 30 In. Excavator Bucket S/N 3064, to t Komatsu PC120 &

Hitachi EX120, Unused
2005 30 In. Excavator Bucket S/N 3066, to t Komatsu PC120 & Hitachi EX120, Unused
2005 24 In. Excavator Bucket S/N 3057, to t Komatsu PC120 & Hitachi EX120, Unused
2005 24 In. Excavator Bucket S/N 3062, to t Komatsu PC120 & Hitachi EX120, Unused
2005 55ft Long Arm, Stick & Bucket, to t Cat 320BL & 320CL Excavator, Unused
2005 55ft Long Arm, Stick & Bucket, to t Hitachi EX200LC & ZX200LC Excavator, Unused
2005 55ft Long Arm, Stick & Bucket, to t Komatsu PC200LC-6 & 7, PC210LC-6 & 7 Excavator, Unused
Volvo High Tip Loader Bucket
(5) Loader Bucket
(2) 5 Finger Hydraulic Grapple, to t material handler

Agg. Tractors

2005 Eurotrac F-80 4x4 Agricultural Tractor S/N TD001764Y, c/w Unused
Renault 75-14LS Agricultural Tractor S/N 42C0615
John Deere 3640 Agricultural Tractor S/N 551100
Fiat F-100 Winner Agricultural Tractor S/N 362515
2005 Janma 25-2 Agricultural Tractor S/N 5120200879, Unused
2005 YTO LF80-90 Agricultural Tractor S/N 509405, c/w 90HP, Unused
2005 YTO LF80-90 Agricultural Tractor S/N 509407, c/w 90HP, Unused



Foremost Delta Artic Project Truck



Marks SF502 Asphalt Pro



Ingersoll-Rand SP48DD



Cat 400 KVA Genset



Bomag Double Drum Compactor



Furukawa FL170 4x4



Haulotte 76CH Crawler Manlift



2005 Jinma 180 Agricultural Tractor S/N 51202000007, c/w 25HP, Unused

Harvesters

1995 John Deere 6810 Mobile Harvester S/N Z06810X501393, c/w 1999 John Deere 630 Harvester cutting head, ac cab

Agg. Equipment

(2) Bosch AHS600 Hedge Trimmer, c/w 60cm, 220V Cyclo Walk Behind Mower, c/w wisconsin robin petrol engine
 Blue Bird F20B Lawn Scari er S/N M1669, c/w petrol
 Blue Bird C185BFC Lawn Scari er S/N P1249, c/w petrol
 Blue Bird C185BFC Lawn Scari er S/N P1182, c/w petrol
 Blue Bird C185BFC Lawn Scari er S/N P1191, c/w petrol
 Husqvarna 964002639 Master 46 Lawn Mower S/N 32000189, c/w 3.5pk, petrol
 Husqvarna 964002639 Master 46 Lawn Mower S/N 42001566, c/w 3.5pk, petrol
 Husqvarna 964002639 Master 46 Lawn Mower S/N 42001570, c/w 3.5pk, petrol
 Husqvarna Master 46 Lawn Mower S/N 30100369, c/w 3.5pk, petrol
 Husqvarna 952 71 53-94 BV24 Leaf Sucker/Blower S/N 2003/111N20157, c/w petrol
 (2) Husqvarna 953.51.15-59 141B Leaf Blower S/N 1000792
 (2) Walk Behind Cultivators, c/w Honda petrol engine
 (2) Cultivator
 (2) Cultivator
 2002 Bugnot Thierlon BV-7 Portable Wood Chipper S/N

1603006
 2002 Bugnot Thierlon BV-7 Portable Wood Chipper S/N 1603064
 2002 Bugnot Thierlon BV-8 Portable Wood Chipper S/N 1603054
 (5) 2005 Eurotrac PH-5 5ft Mower, Unused
 (2) 2005 Agree PH-165 Rotovator, Unused
 (2) 2005 Agree PH-185 Rotovator, Unused
 (2) Walk Behind Cultivators, c/w petrol engine
 (3) Honda Forestry Mower
 (2) Cultivator
 TCS2200 000707 Wood Chipper, c/w electric
 TCS220 Wood Chipper S/N 7F30000345, c/w electric

Skid steer Loaders

2005 Boxer 45 Skid Steer S/N 23664, Unused
 2005 Boxer 45 Skid Steer S/N 23665, Unused
 (5) Bobcat 443 Skid Steer Loader
 1992 Komatsu SK07-2 Skid Steer Loader S/N 4201, c/w bkt, quick hitch
 Skid Steer Loader S/N 30016, c/w bkt, canopy, 3 cyl dsl engine

Compaction

2005 Tacom TK80D Tamping Rammer S/N 2938, c/w Robin petrol engine
 2005 Tacom TK80D Tamping Rammer S/N 2920, c/w Robin petrol engine
 Bomag GMBH BPR 50/52D Plate Compactor S/N 101690101870, c/w 450kg/50kn

Bomag GMBH BPR 50/52D Plate Compactor S/N 101690102034, c/w 450kg/50kn
 Bomag BW85TR Walk Behind Roller S/N A103881, c/w double drum, dsl engine
 1995 Wacker DPU2440F Plate Compactor S/N 726153661, c/w dsl engine
 Wacker Plate Compactor S/N 444411, c/w dsl engine
 Wacker ISD 430 Plate Compactor S/N 880815, c/w dsl engine
 (2) Plate Compactor
 Plate Compactor S/N 3476236, c/w Honda petrol engine

Tires

(8) Tires, 20.5-25, 20 Ply, Unused
 (20) 2005 Honour Tires, c/w 20.5x25, Unused

Generator Sets

Cummins 300kva Generator Set, c/w box type, skid mounted
 (2) Cummins 250kva Generator Set, c/w box type, skid mounted
 Cummins 400kva Generator Set, c/w box type, skid mounted
 (2) Cat 365kva Generator Set, c/w Cat 3406 engine, box type, skid mounted
 (3) 2005 Milano 30kva Generator Set, c/w 4 cyl dsl, super silent type, on trailer, Unused
 SMIT/SDMO SDMO/DS27 30kva Generator Set S/N SGK27337A
 EP6500T H/S 6.5kva Generator Set S/N 5383
 EP6500T H/S 6.5kva Generator Set S/N 3933-02/1097775
 EP6500T H/S 6.5kva Generator Set S/N 1093/03

Vibratory Roller

Ingersoll Rand SP48DD Vibratory Roller S/N 5746, c/w 4-cyl dsl engine, ROPS

Forklifts

2005 YTO DFH-FD60 6 ton Forklift S/N 1356, c/w 6 cyl dsl, automatic, Unused
 1992 Toyota 2FG14 1.35 Ton Forklift S/N 2FG14-10804, c/w 4-cyl petrol engine, 1 stage mast, canopy
 Ameise EFG7258-G115-366ZT 2.5 Ton Battery Forklift S/N N2800102, c/w 2 stage view mast, canopy
 Hyster 1 Ton Battery Forklift S/N AS160 E 1771, c/w 2 stage mast, canopy
 Battery Forklift S/N 53000233, c/w 3 stage mast
 Toyota 02-2FG10 1 Ton Forklift S/N 2FGH10-12265, c/w 2 stage mast, 4 cyl petrol engine, canopy
 Caterpillar V60B Forklift S/N 74P1040, c/w 2 stage mast, 4 cyl dsl engine, canopy
 Still R70-16 1.6 Ton Forklift S/N 70313585, c/w 3 stage sideshift container mast, 4 cyl dsl engine, canopy
 Still Battery Forklift S/N OBL, c/w 2 stage mast, canopy
 Eaton Battery Forklift S/N E1500181, c/w 2 stage mast, canopy
 Caterpillar Forklift S/N OBL, c/w 2 stage mast, 3 cyl dsl engine, canopy
 Yale EV105T-76 1 Ton Battery Forklift S/N 652064, c/w 3 stage mast, canopy



'07 Ball R30D Choice of 6



'03 Volvo L110E



'01 Iveco LD440, Choice of 3



'00 ICB 450 HD Choice of 2

Crawler Dumptrucks

Crawler Dumptrucks;
Morooka MST-600 3.5 Ton Crawler Dumper S/N 1893, c/w 75PS, rubber track, mono forward & reverse steering

Manlifts

Sumner Material Lift S/N ID# 51846, c/w 7.2 mtr height
Sumner Material Lift S/N ID# 22016, c/w 7.2 mtr height
Sumner Material Lift S/N ID# 21037, c/w 7.2 mtr height
Sumner Material Lift S/N ID# 18034, c/w 7.2 mtr height
Sumner Material Lift S/N ID# 19512, c/w 7.2 mtr height
Vlutters VH21 Articulated Ladder Hoist S/N 6792, c/w Honda 13 HP petrol engine, trailer mtd
Etramo/Skyhigh 1200AH Electric Articulated Boom S/N AHC406, c/w trailer mtd
Etramo/Skyhigh 1200AH Electric Articulated Boom S/N 19201/C, c/w trailer mtd
Vlutters V21 Ladderlift S/N 8086, c/w 21 meters reach
Bocker Picooh Ladder Hoist S/N 27955, c/w 20m, 220V
Steinweg ML21E(HS-JA739) Ladder Hoist S/N 21128996, c/w 20m, 220V
Haulotte 76CH Manlift S/N 2117, c/w 3 cyl dsl engine, crawler type
Paus Ladderlift S/N 64952, c/w Honda petrol engine, trailer mounted

Aircompressors

1992 Ingersoll Rand P375 Air Compressor S/N 600357E92407,

c/w 6 cylinder Deutz diesel engine
 1991 Atlas Copco XAS 125 Air Compressor S/N YA3-047069-00600623, c/w 6 cylinder Deutz diesel engine
 1997 Atlas Copco XAS46DDG Air Compressor S/N YA3-3062320-10378270
 1997 Atlas Copco XAS46DDG Air Compressor S/N YA3-3062328-10378372
 1997 Atlas Copco XAS46DDG Air Compressor S/N YA3-3062328-10378376

Welding sets

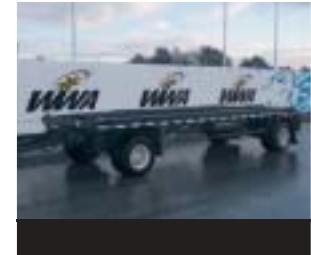
380amp Electric Welding Set S/N motor # 108093
 (2) Aireco Turbo160 Electric Powered Welder, c/w 140A
 (2) Blue Weld 2160 Electric Powered Welder, c/w 140A
 (2) Aireco Basica200 Electric Powered Welder, c/w 200A

Skid Dumps

Thwaites Skid Dumper S/N 98089, c/w ROPS, 7 tons

Mobile Accomodation Units

(12) Mobile Sanitary Units
 (8) Mobile Combicabin, c/w 6X3 M
 Hiltra MZB 2706 Pay Desk Unit
 (2) Koma GMBH Shower/Toilet Combicabin, c/w 6X3 M
 Koma GMBH Wash/Toilet Combicabin S/N C 80649, c/w 6X3 M
 Komo Porto Cabin, c/w 3pcs 6x3mtr cabin
 Komo Porto Cabin, c/w 2pcs 6x3mtr cabin



Cars

1993 Nissan Primera 1.6 Invitation Saloon S/N SJNBAAP10U0369405, c/w 4-cyl petrol engine, P/S, P/L, sunroof, green
 Vauxhall Opel 4x4 Pickup S/N JAATFS54HR7101083, c/w 4-cyl dsl engine, P/S, RHD, enclosed box

Light Towers

Night-Lite Pro Portable Light Tower S/N 004NLP07, c/w 10kva generator set

Breakers

(2) Stewart-Warner 16 D 1/2" AG Pneumatic Breakers, c/w 10kg
 (2) Eyle & Ruygers Pneumatic Breakers, c/w 10kg

(4) Stewart-Warner 16 D 1/2" AG Pneumatic Breakers, c/w 10kg
 (2) Eyle & Ruygers THOR234 Pneumatic Breakers, c/w 30kg
 (2) Stewart-Warner PB21 Pneumatic Breakers, c/w 20kg
 (4) Atlas Copco KANGO 900 K Electric Breakers, c/w 11kg
 (8) Bosch TE505 Electric Breakers, c/w 6kg, SDS

Recreational items

(10) 2005 RaceBike Motorcycles, c/w 50cc, Unused

Please note, this is only a partial list of the current machines, please check our website for the updated list.